

What cities and counties can do to respond to and prepare for drought

Ken Snyder, CEO, PlaceMatters

February 14, 2014



PLACE/MATTERS



PLACE / MATTERS

IN BUSINESS

11
YEARS

OFFICE
LOCATION

Denver
1507 Blake St.

STAFF
SIZE

7
EMPLOYEES

GRANTS AND
AWARDS

2011-2013 – Ford
Foundation – Equitable
Engagement Initiative

2011-2015 – HUD/DOT/
EPA Sustainable
Communities Initiative –
Capacity Building
Intermediary

2011 - Colorado APA
Outstanding Planning
Project Award – Plan
Fort Collins

2011- Colorado APA
Merit Award – Lyons
Comprehensive Plan

2011 – Colorado APA
Merit Award – Woodland
Park Comprehensive
Plan

SPECIALITIES

Community Decision-Making
Decision-Support Tools
Process Design and Sequencing
Stakeholder Engagement
Data Analysis and Interpretation
Training
Evaluation

UNIQUE
SERVICE

501(c)3 Non-profit status
Proven success with high-tech
and high-touch tool sets



Water and the West



Lyons, CO (pre)



Slide from Drew Beckwith at Western Resource Advocates

Lyons, CO (post)



Slide from Drew Beckwith at Western Resource Advocates

Longmont, CO (pre)



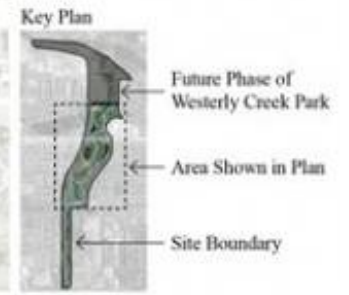
Slide from Drew Beckwith at Western Resource Advocates

Longmont, CO (post)



Slide from Drew Beckwith at Western Resource Advocates

Westerly Creek



■ Stapleton Plan





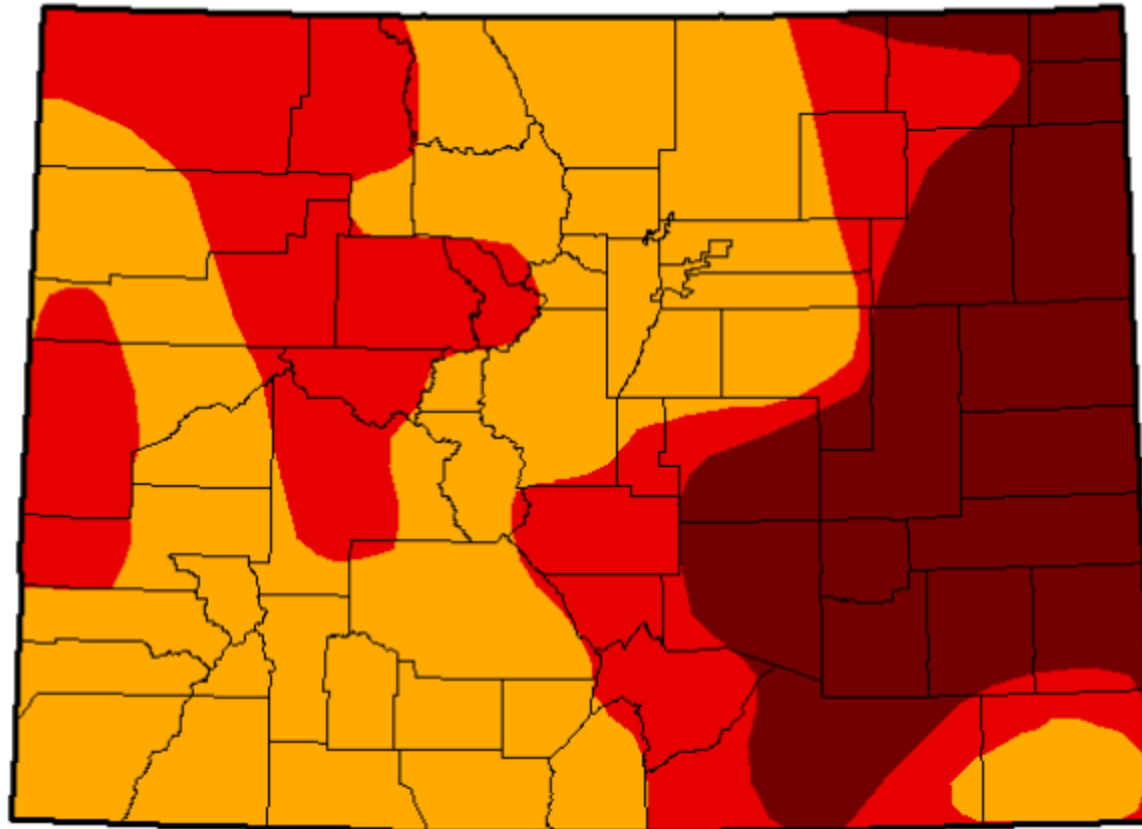


Drought (the new norm?)

February 5, 2013

(Released Thursday, Feb. 7, 2013)

Valid 7 a.m. EST



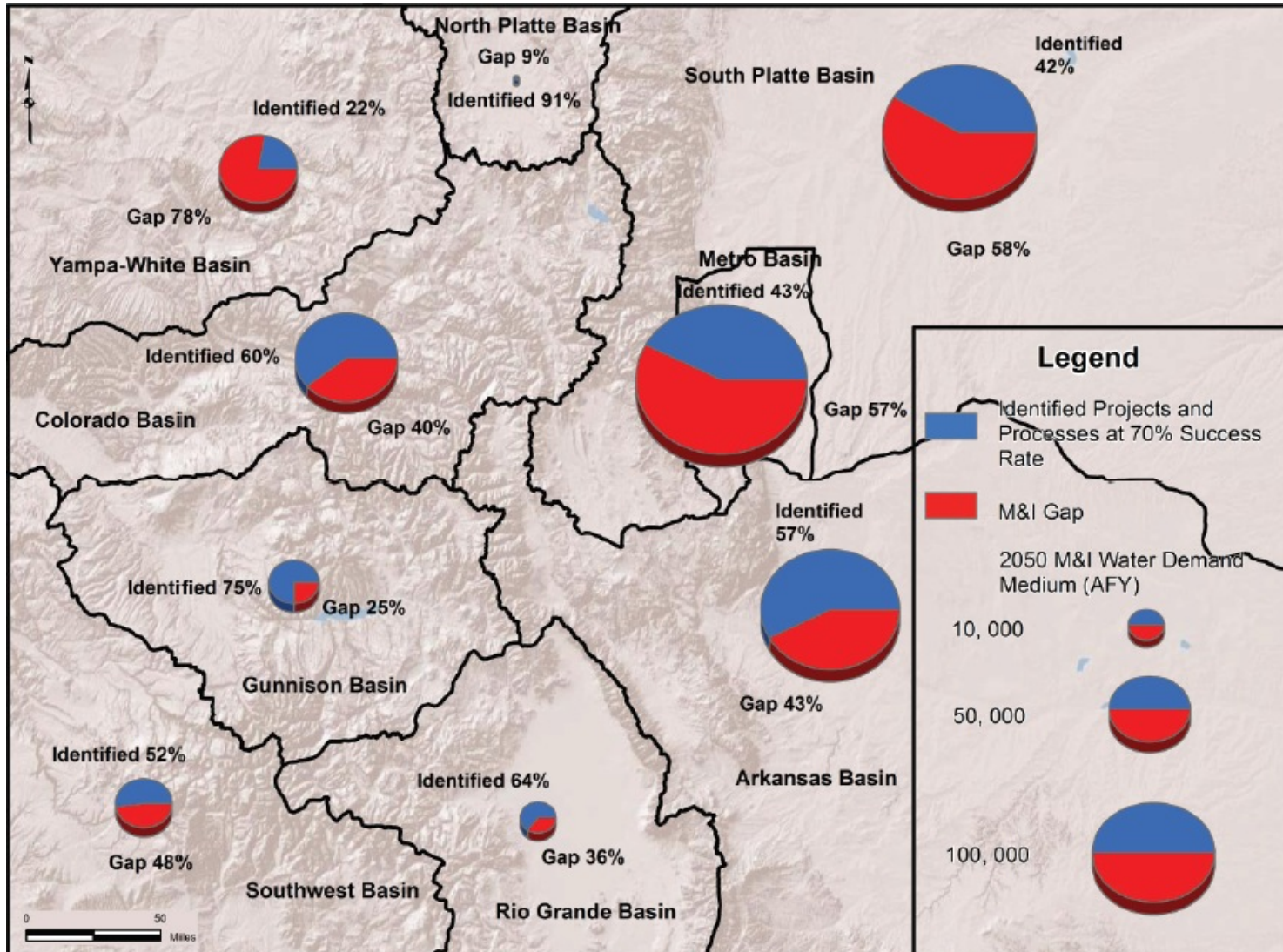
Drought Conditions (Percent Area)

	None	D0-D4	D1-D4	D2-D4	D3-D4	D4
Current	0.00	100.00	100.00	100.00	54.29	24.92
Last Week <i>1/29/2013</i>	0.00	100.00	100.00	100.00	58.58	13.50
3 Months Ago <i>11/6/2012</i>	0.00	100.00	100.00	91.33	48.56	13.69
Start of Calendar Year <i>1/1/2013</i>	0.00	100.00	100.00	95.06	53.47	13.48
Start of Water Year <i>9/25/2012</i>	0.00	100.00	100.00	100.00	61.75	16.89
One Year Ago <i>2/7/2012</i>	30.48	69.52	41.07	10.60	0.21	0.00

Intensity:

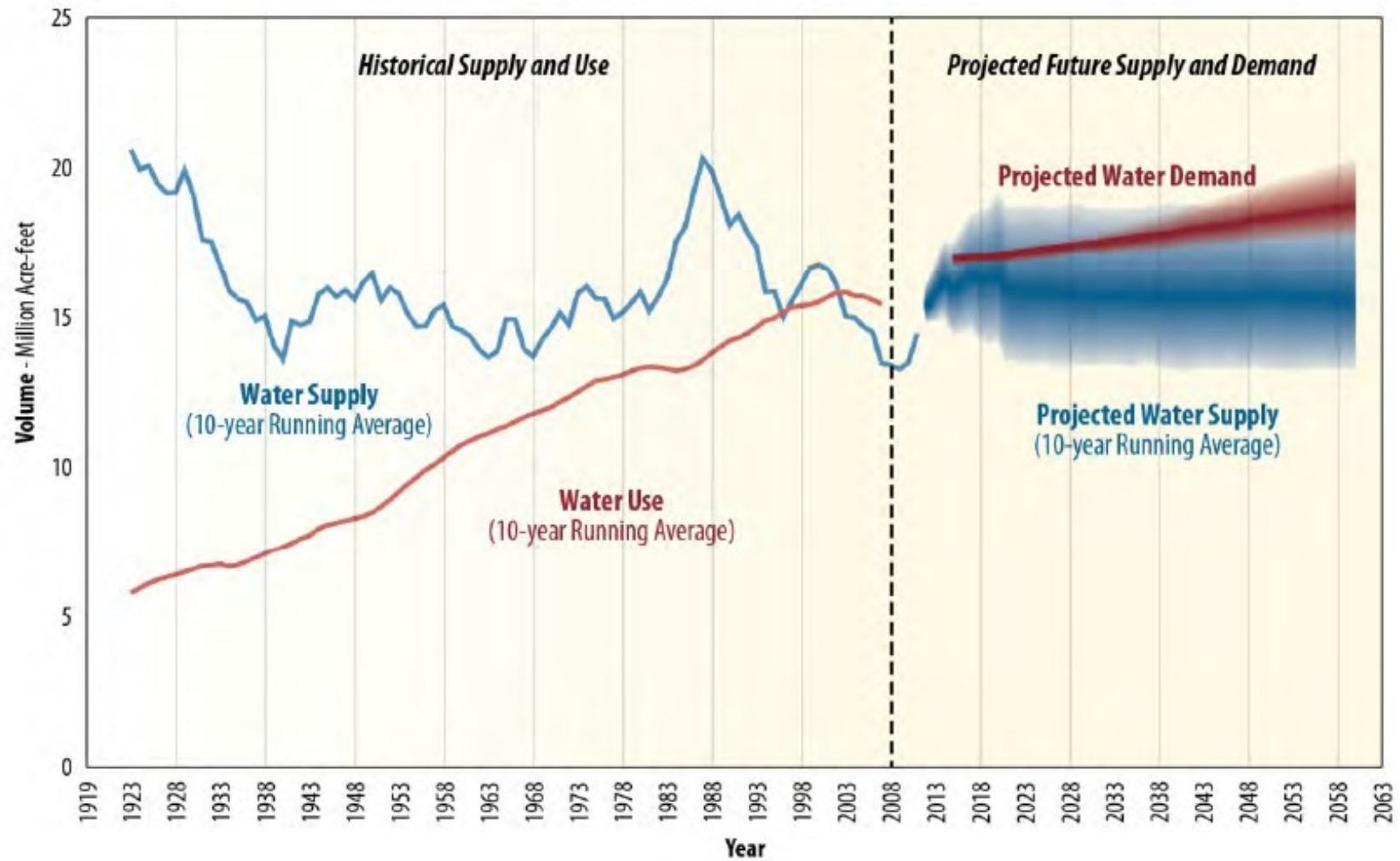


Water Supply Gap (CO)



Colorado Water Conservation Board. 2011. *Statewide Water Supply Initiative 2010*.

Water Supply Gap (CO River)



US Bureau of Reclamation. 2012. *Colorado River Basin Study*.

■ What Can Local Officials do to Respond to and Prepare for Drought?

Short list:

- Enforce water use restrictions
- Consider equity in impacts in setting priorities
- Coordinate with water agencies to ensure local priorities are met
- Increase conservation requirements for new construction
- Work with the Green Industry to develop or refine standards for landscape water conservation
- Speak up on climate change
- Use the current crisis to set future policy

■ Best Practices and Lessons Learned

Lessons:

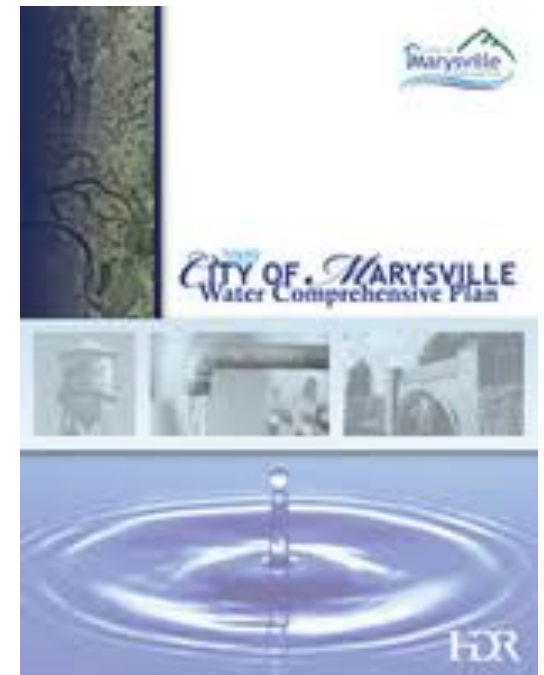
- Review basic land use regulation tools (zoning, subdivision, building permits, as well as state-specific laws)
- Review the elements of a water supply conservation plan and how that could/might/did relate to the city's comprehensive plan



Best Practices and Lessons Learned

Assess the quality of the water element of your city comprehensive plan – particularly its water element – to ensure that it:

- Is internally consistent with growth projections elsewhere in the plan
- Is externally consistent with regional or provider constraints on supply or treatment
- It includes the level of detail necessary to allow it to be used in making planning decisions
- It addresses recommended water conservation strategies



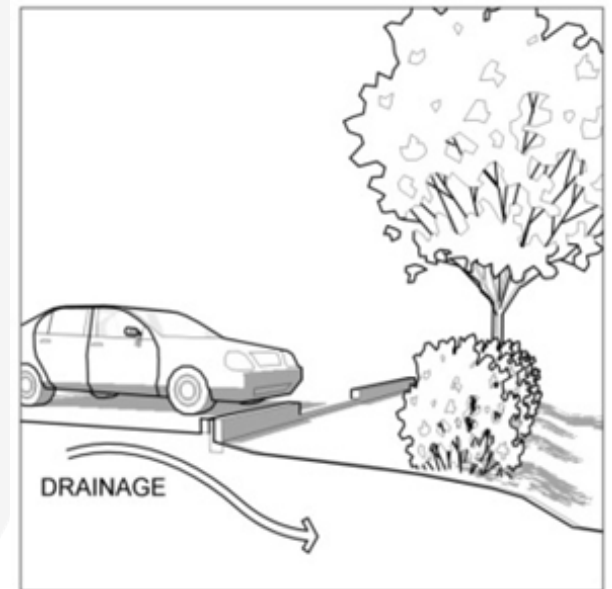
Best Practices and Lessons Learned

- Ensure that the water element of the comprehensive plan is listed as one of the criteria to be considered in making discretionary zoning and subdivisions, and in site plan review.
- Draft the zoning and subdivision regulations to include specific standards for required water conservation in site design (e.g. a maximum % of irrigated turf) and objective criteria for decision-makers to use in evaluating development applications



Best Practices and Lessons Learned

- Draft the zoning requirements for parking lot design allow for or require curbless construction or infiltration areas in landscaped islands.
- Draft the zoning regulations to avoid the creation of large new impervious areas of the site through
 - Limitations on impervious surface
 - Limitations on surface parking areas
 - Allowing or requiring pervious pavers.



Best Practices and Lessons Learned

- Ensure that the zoning regulations are consistent with the city plumbing code
 - i.e. if zoning regulations require or incent specific types of fixtures or features, does the plumbing code allow them?
 - Ensure that the comp plan, zoning regulations, and subdivision regulations allow or incent:
 - Small lot single family residential development
- AND
- Compact, mixed-use, infill development



■ Best Practices and Lessons Learned

- Ensure that the city or county's road/street regulations require the installation of water-conserving landscaping or features, and also allow for curbless design on appropriate streets, when existing streets are rebuilt in the future.

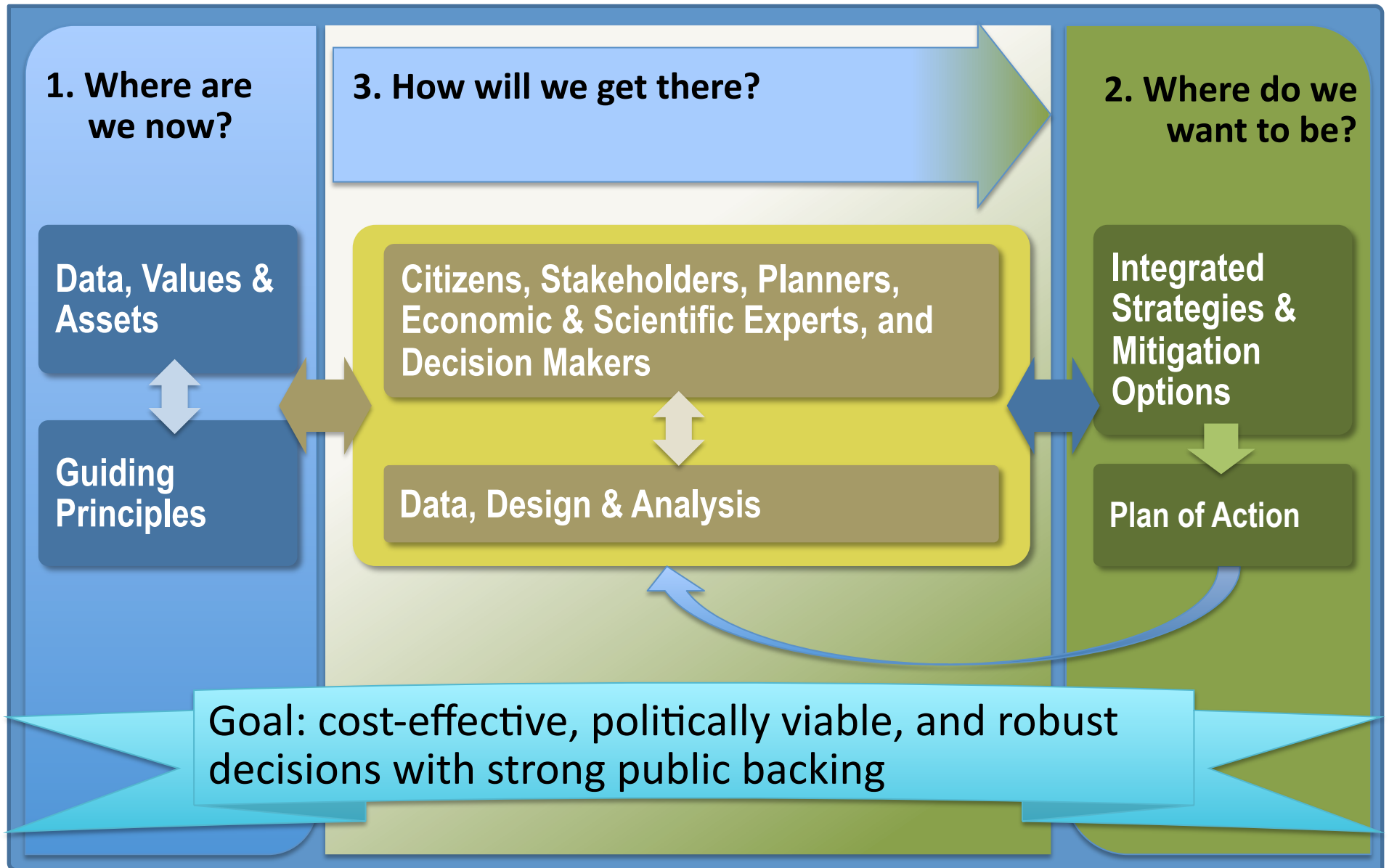


■ What Can Local Officials do to Respond to and Prepare for Drought?

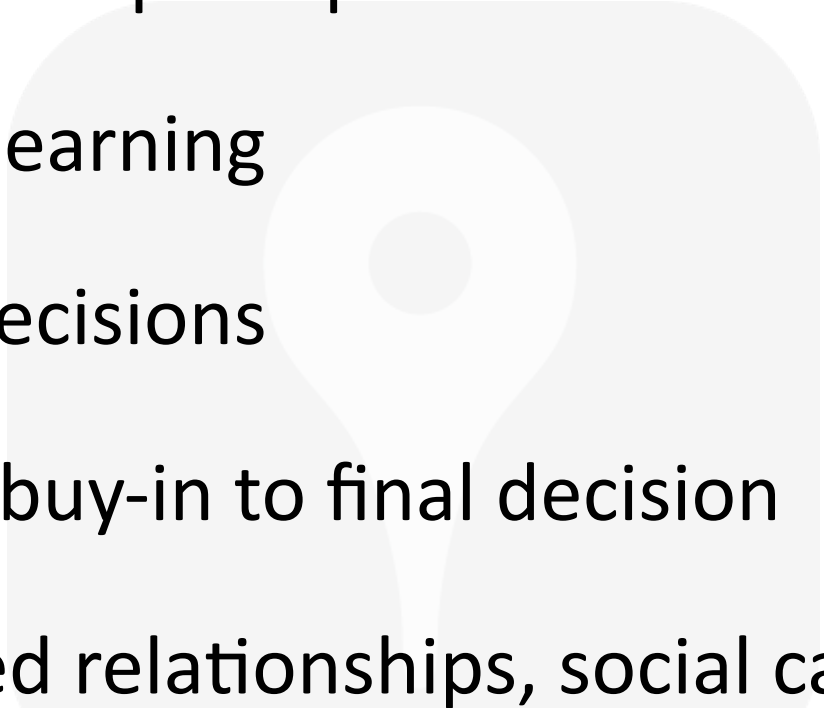
- Use scenario planning to understand options



What is Scenario Planning?

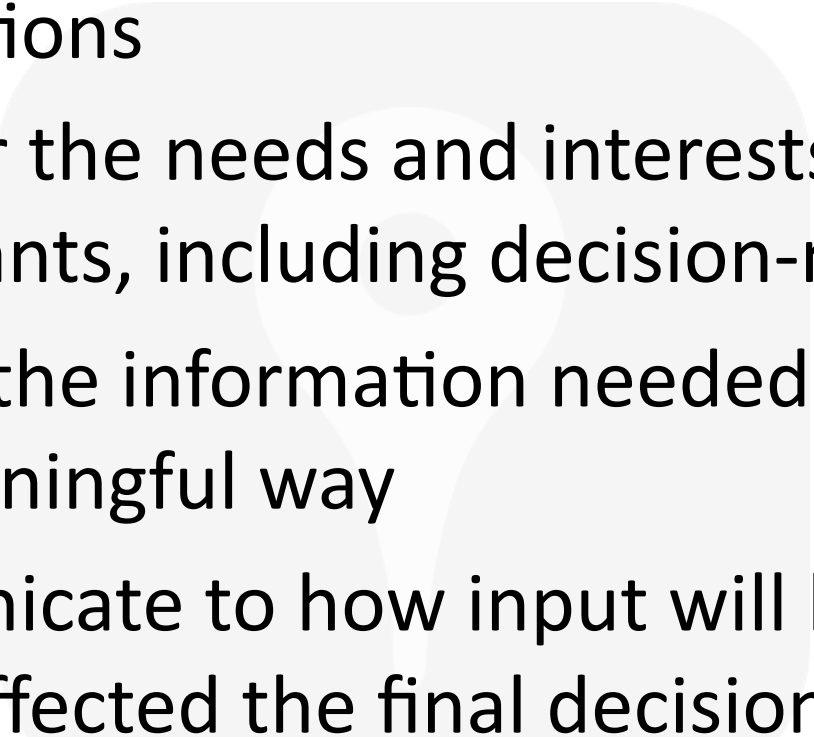


■ Why do public participation?

- Democratic principles
 - Mutual learning
 - Better decisions
 - Greater buy-in to final decision
 - Enhanced relationships, social capacity
- 

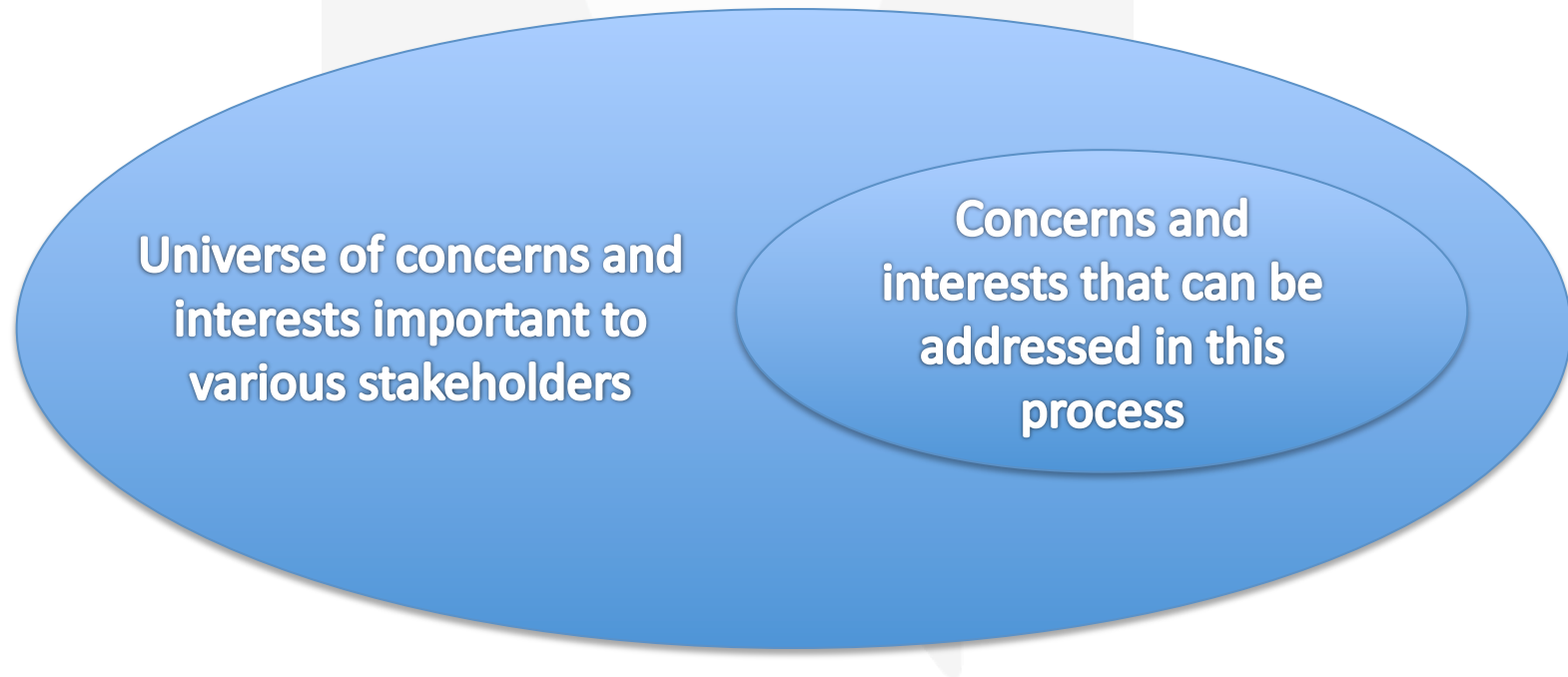


Principles of effective public participation

- Clearly define roles, responsibilities and expectations
 - Consider the needs and interests of all participants, including decision-makers
 - Provide the information needed to participate in a meaningful way
 - Communicate to how input will be used, and how it affected the final decision
- 

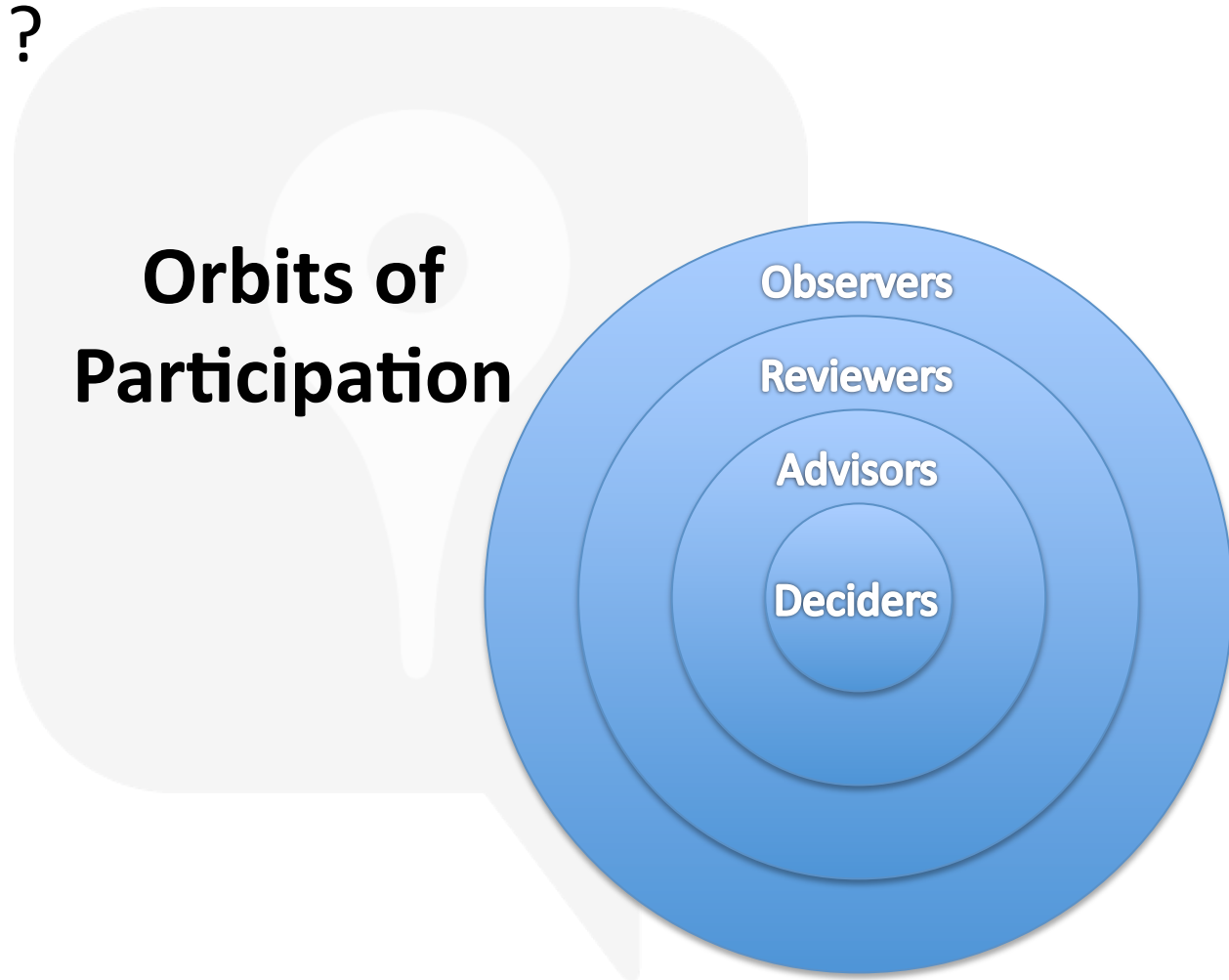
■ Key considerations

- Who is the decision maker?
- What is the decision to be made?



■ Key considerations

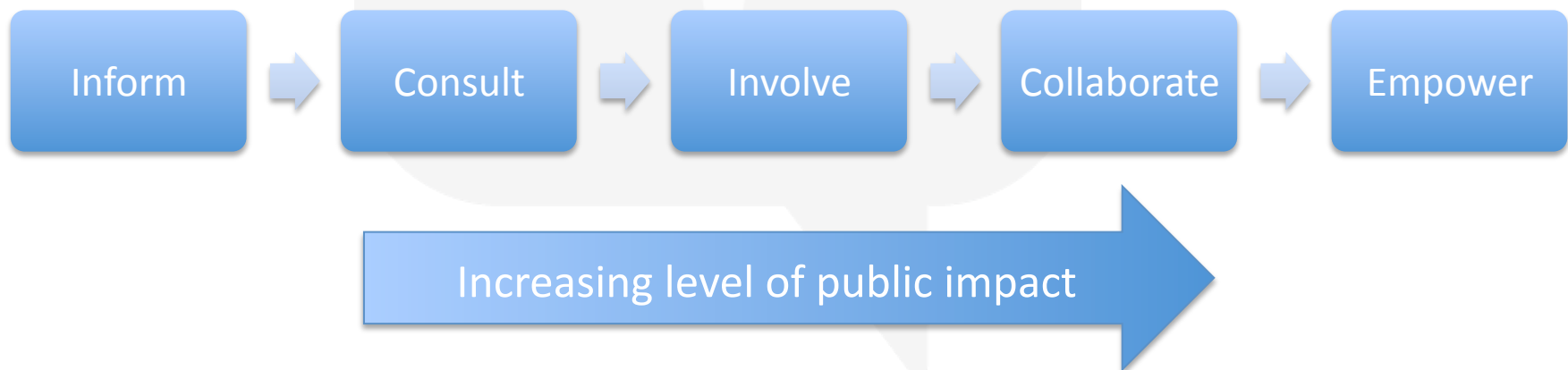
- Who has an interest in the outcome of the decision?



■ Key considerations

- How will the decision be made?
- What is the public's role in the decision-making process?

Public Participation Spectrum



■ Public participation goal



Increasing level of public impact

- **Inform** – impart information
- **Consult** – seek information or feedback
- **Involve** – engage as participants
- **Collaborate** – work as partners
- **Empower** – place final decision-making in the hands of the public

■ Promise to the public



Increasing level of public impact

- **Inform** – we will keep you informed
- **Consult**
- **Involve**
- **Collaborate**
- **Empower** – we will implement what you decide

■ Promise to the public



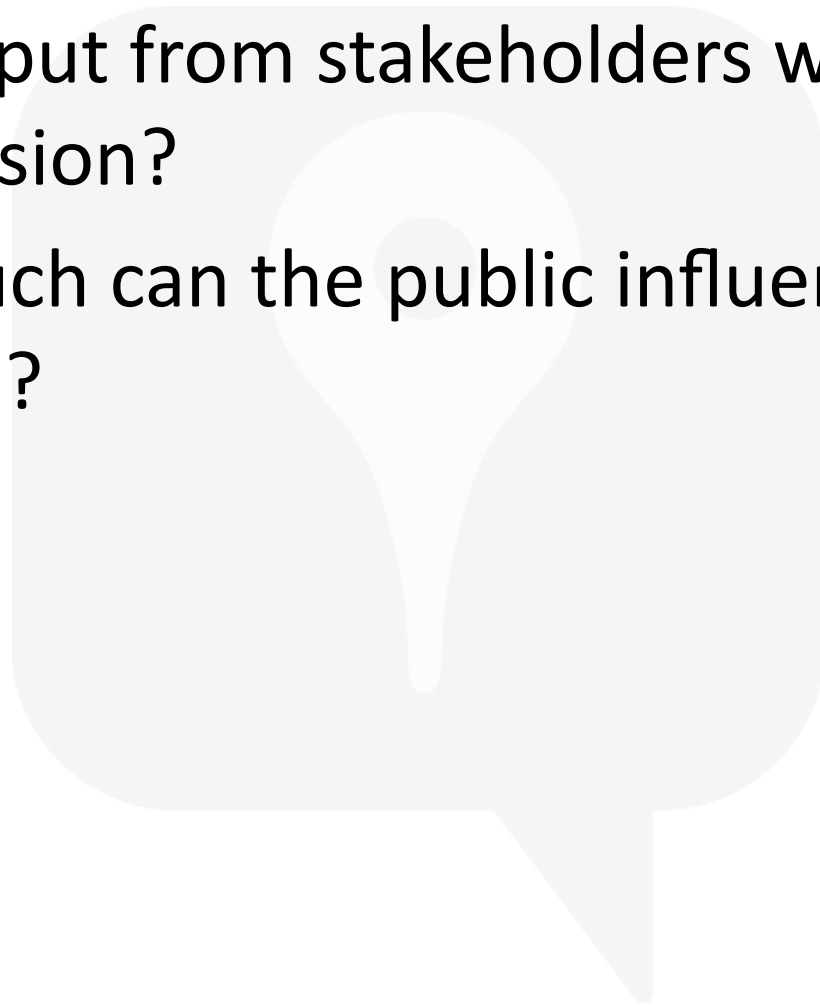
- **Inform**
- **Consult**
- **Involve** – we will work with you to ensure your concerns and aspirations are directly reflected in the alternatives developed
- **Collaborate**
- **Empower**

■ Spectrum of public participation

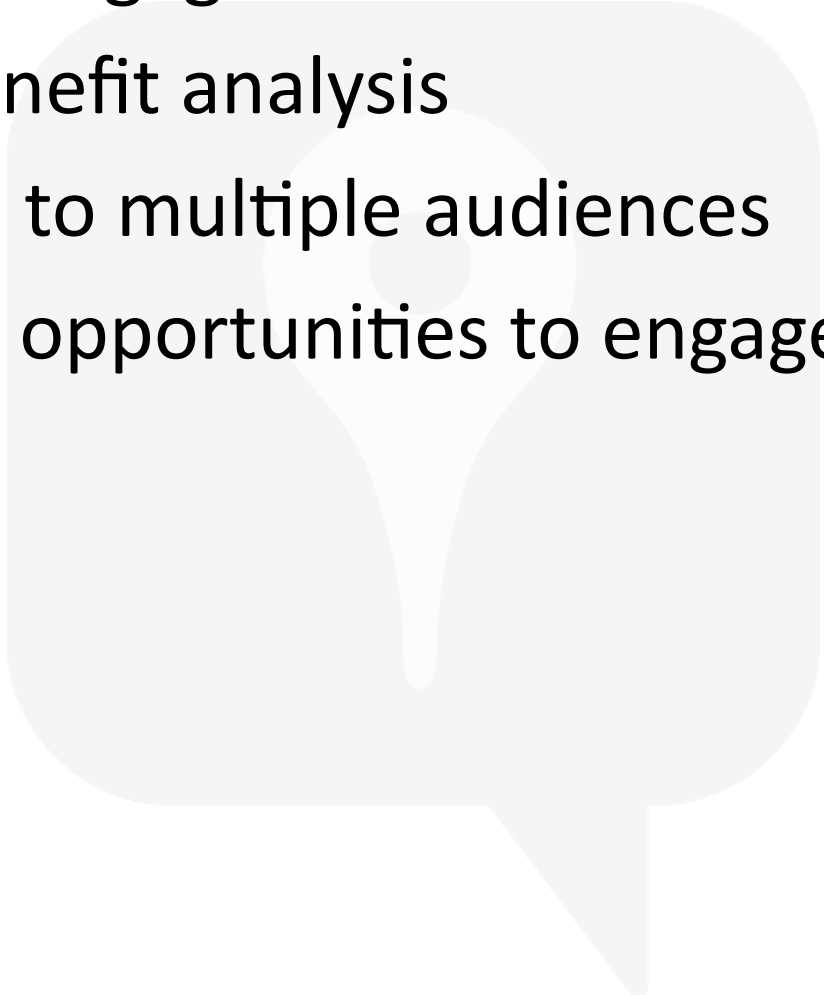
	Define problem	Gather info	Establish criteria	Develop options	Evaluate	Decide
Inform	X					X
Consult		X			X	
Involve				X		
Collaborate			X			
Empower						

■ Selecting the right level of engagement

- What resources are available?
- What input from stakeholders will help inform the decision?
- How much can the public influence the decision?



■ Selecting the right set of tools

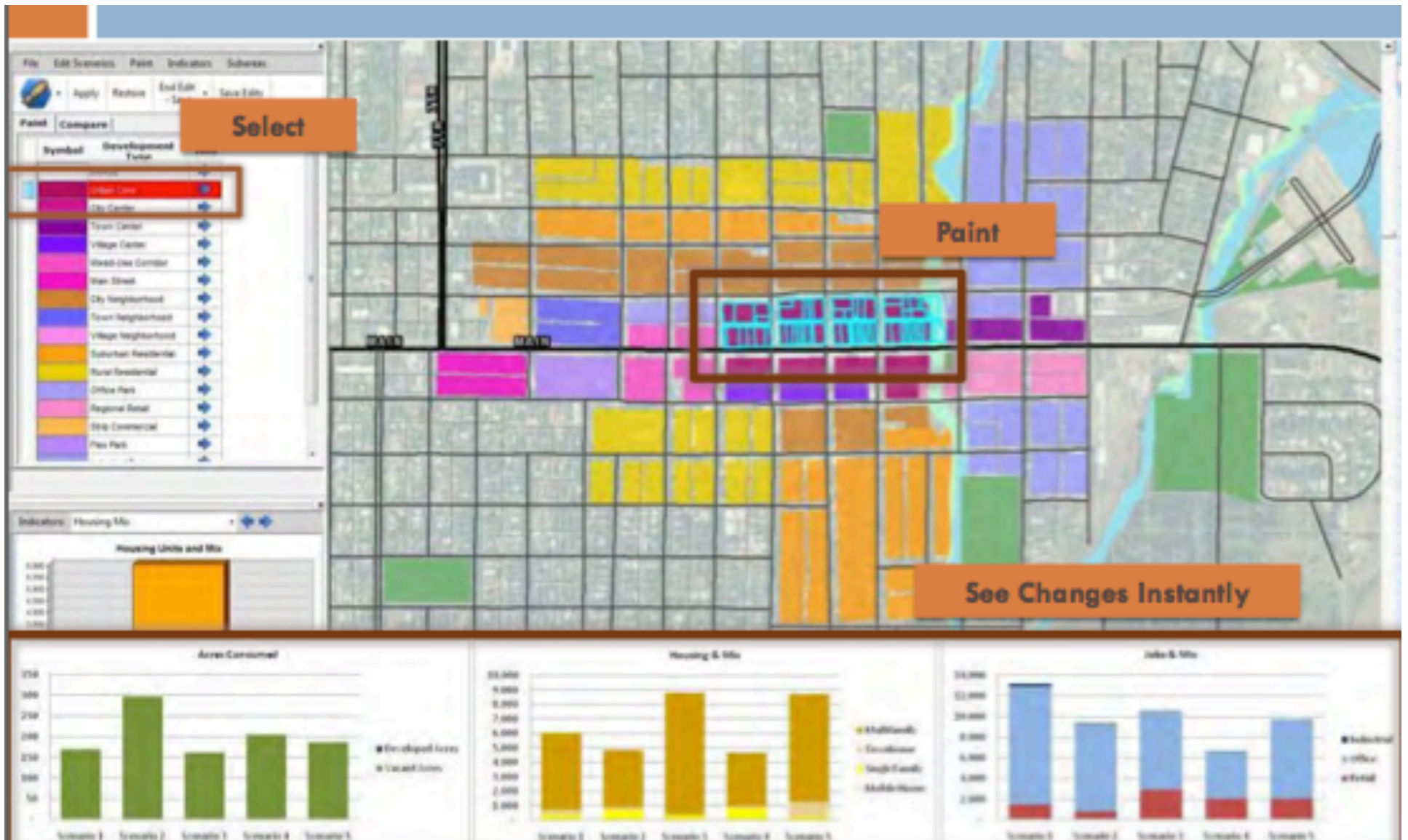
- Level of engagement
 - Cost/benefit analysis
 - Tailored to multiple audiences
 - Layered opportunities to engage
- 

■ Participatory Scenario Planning

- A scenario developed by the participants poses questions that require analytics which require data.
- The data must all derive from the scenario.
- The planning tool must deliver useful information in a timely manner to the participants.

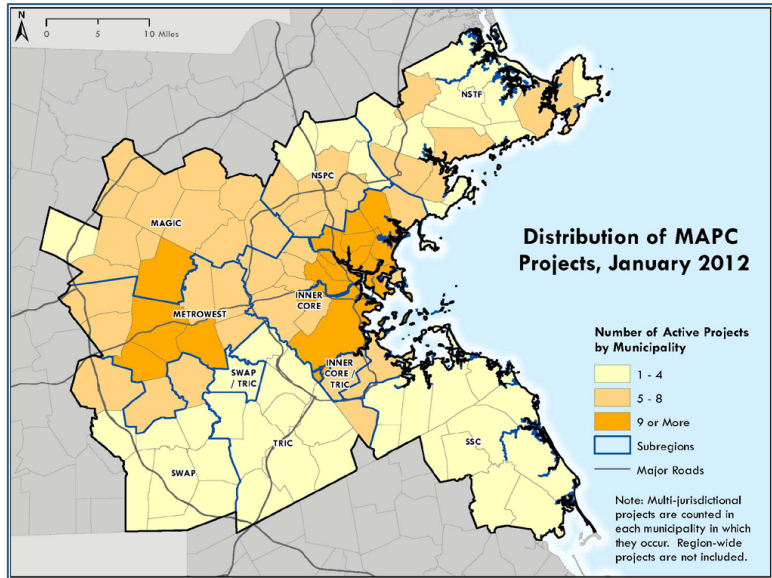
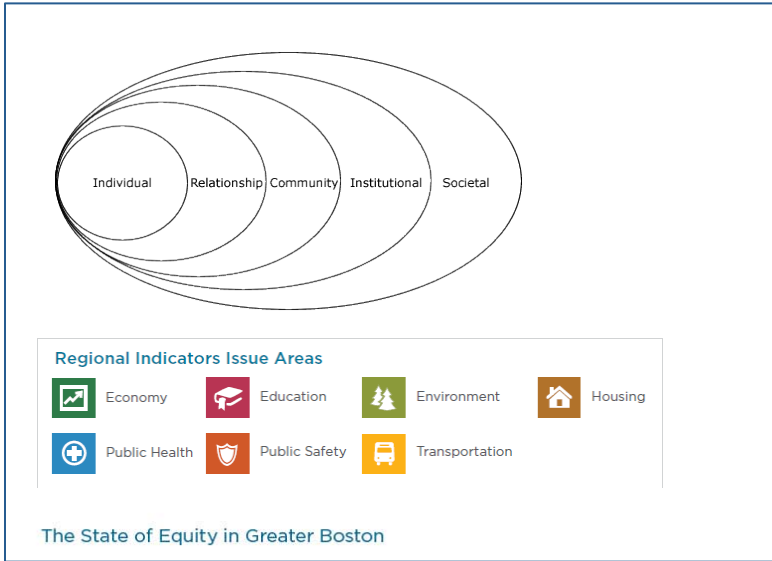
Shared Learning: Sketch Planning

Envision Tomorrow Plus



Building Long Term Capacity

Improving Agency Effectiveness



SeeClickFix

Washington, DC [change]

Issues:

- Illegal Dumping - Closed**
3500 Whitehaven Parkway Northwest Washington, DC 20007, USA - Glover Park
Mattress and other debris dumped on south side of whitehaven at NW between 35th st and Wisconsin avenue
2013-01-20 - Reported by BC - Share - Flag
- ACKNOWLEDGED DC 311**
Your request to DC311 has been accepted. Your service request ID is 13-00015550
2013-01-20 - Flag
- CLOSED DC 311**
Issue resolved by DC311 call 311 for more details.
18 minutes ago - Flag

TOP USERS

■ Market vs Regulation in California

Feb 12 editorial in the San Diego Tribune by Steven Greenhut

“Conservation has helped, with Californians using far less water now than they did decades ago -- an environmental success story, of course. But the “conservation” mantra would be more compelling if those reciting it weren’t so dead-set against new water sources, a stance that reinforces the claim that they are using water politics to halt growth”

■ NPSG Session on Building Leadership for Water Wise Growth in the West

- Tiffany Zezula-Managing Director of Training at the Land Use Law Center at Pace University
- Drew Beckwith-Water Policy Manager, Western Resource Advocates
- Don Elliot-Clarion Associates
- Susan Daggett-Director, Rocky Mountain Land Use Institute

The Land Use Law Center of Pace University School of Law

The Land Use Leadership Alliance (LULA) Training Program Focuses on Collaborative Learning

- Chairs and members of legislative body
- State and Regional Water Specialists
- City Managers
- Water and Land Use Planners
- Planning and zoning board members
- Administrative board members
- Representatives of environmental and civic groups
- Local Landowners
- Developers
- Business leaders



Best Practices and Lessons Learned

- Ensure that monitoring and enforcement capacity is aligned with zoning, subdivision, and plumbing code requirements.
 - Requirements that cannot be enforced due to lack of skills or money are useless
 - Watch out, some types of water conserving site features require regular monitoring and periodic maintenance more frequently than hard surfaces.
 - If the city and county do not have staff to perform those duties, they can be imposed on the property owner, but:
 - It discourages compliance with the new standards, and
 - Now the city or county needs to monitor and enforce the property owner's monitoring and enforcement.



Q&A



PLACE/MATTERS



Thank You

Ken Snyder, CEO

PlaceMatters

ken@placematters.org



PLACE/MATTERS